

Connected Coffee Intelligence

The key to smarter operations

For a coffee business on the rise, achieving consistent roast quality is just the beginning. **The real growth hurdle?** The ability to connect data for an accurate, complete picture of what's happening from bean to cup. How can you make smart operational decisions with disjointed data?

Without real-time visibility and insights, businesses face constant uncertainty, higher risk and reactive buying, plus more stress in the already high-pressure auditing process.



Make complex decisions based on joined-up, real-time & historical data

Cropster exists to empower businesses with specialized coffee software that forms a complete, traceable intelligence loop – from bean to cup.

“Cropster is about oversight of our entire roasting operation, as well as insight into exactly what's going on”



James Hoffman
Founder and Co Owner

From: Data silos that reduce efficiency and increase errors

Data silos lead to incomplete insights, which requires more manual work to assemble a clear picture. This reduces efficiency and increases the risk of errors, making it difficult to optimize operations and protect margins.



To: Intelligence loops that unlock smart decision making across teams, machines & locations



Cropster connects teams, machines & locations to form a complete coffee intelligence loop: from inventory, to roast, to orders, to retail locations.

3 products collect and connect bean-to-cup data, enabling proactive decision-making, streamlined workflows and comprehensive traceability across your entire coffee business.

Connected data transforms business planning, proactivity and profitability

From finance, to procurement, to roasters, to retail staff, to company management: life with Cropster means smarter operations

Before Cropster

Manual order aggregation and production scheduling are often based on assumptions

Manual green inventory tracking is time consuming and inevitably leads to costly errors

Identifying problem areas and achieving consistent roasts across teams is impossible without insights!

Tendency to over-contract espresso machine technicians for fear of expensive downtime

Compiling reports manually compromises professionalism & purchasing accuracy

With Cropster

Automated production with aggregated order data eliminates over or under-production

Green inventory auto-updates after each roast; reporting on the type, quantity and location at a glance

Consistently managing roasts across different people and machines to replicate success and fix any issues

Espresso machine insights translate into real-time, preventative maintenance strategies... remotely!

Generating reports instantly for accurate auditing, complete accounting & purchasing foresight

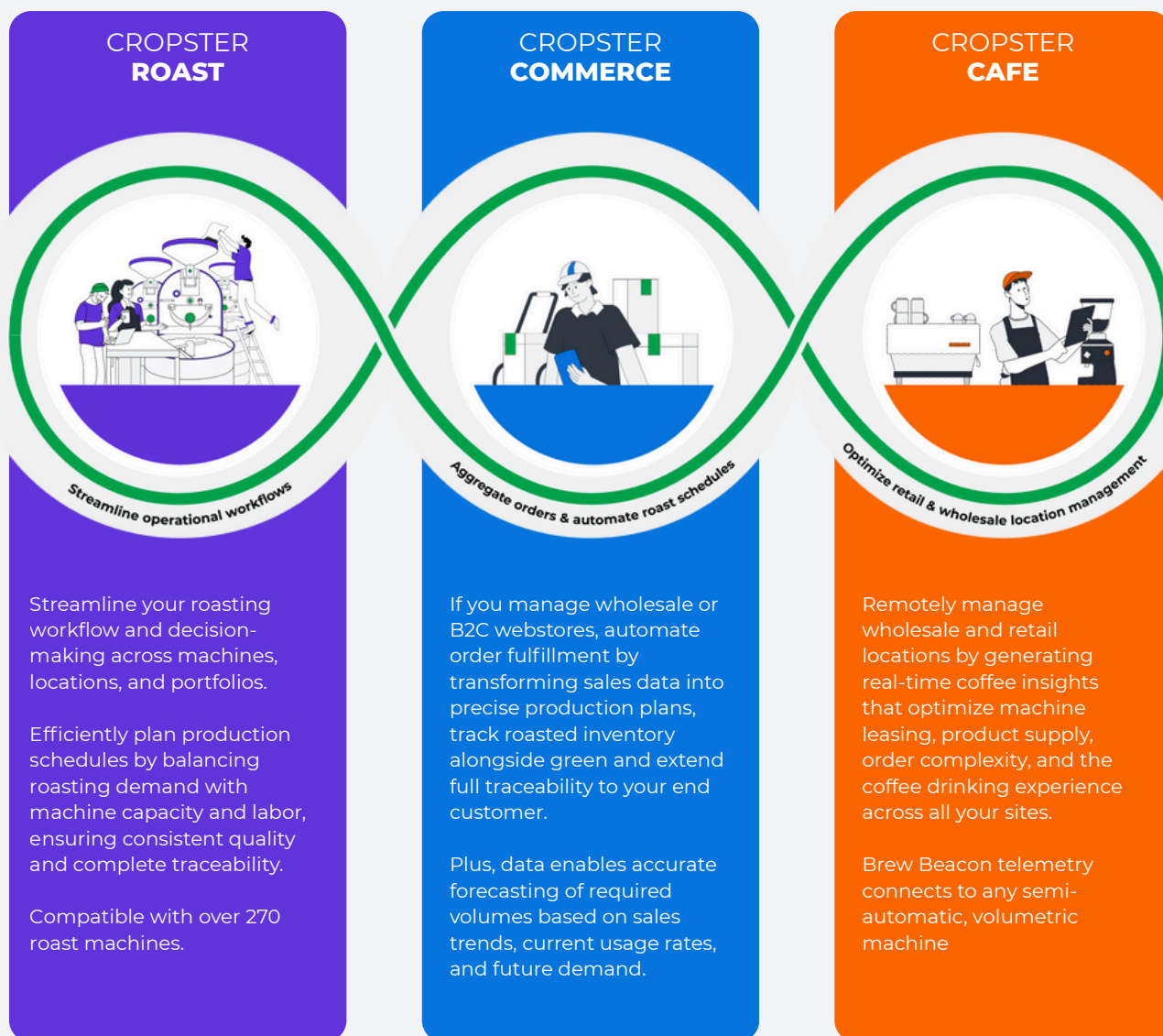
“Cropster changed my life! It really is a fabulous tool that has helped us grow a lot in the business of exporting coffee. I have complete traceability of all my work and I can share a lot more information with our clients”



Jayson Galvis
Director of Quality

The key to coffee intelligence: Bean to cup physical & digital connectivity

To form a complete coffee intelligence loop, Cropster has 3 key products that connect to your roast & espresso machines, webstores and existing tech stack. When combined the products offer benefits greater than the sum of their parts.



99.5% customers stick with Cropster to manage complex operations from bean to cup