

The Admin Tax: Why Manual Data is Killing Your Margin



Table Of Contents

The Admin Tax: Why Manual Data is Killing Your Margin	1
The Hidden Cost of Disconnected Systems	1
Why ERPs Were not Built for Coffee	2
The Operational Gap	2
The Role of a Coffee-specific API Layer	3
What Better Connectivity Unlocks	3

The Admin Tax: Why Manual Data is Killing Your Margin

Running a coffee business means running several businesses simultaneously and handling multiple roles.

On the same day, you are managing the green coffee inventory, checking production data, processing e-commerce orders, while updating your accounting. Each task requires a different tool and your manual input.

The systems do not talk to each other. The data is not shared automatically, so someone on your team has to bridge the gap. That hidden cost, the time, the errors, the never-ending context-switching, very rarely shows up in your balance sheet. But it grows larger every single day.



The Hidden Cost of Disconnected Systems

In many coffee businesses, the integration layer is not software. It is a person.



One team member spends their day manually pulling data from one spreadsheet to another and hoping nothing gets lost. That is the salary you are paying for a “human data-bridge” and a task that should not exist.



The time cost is significant and measurable. That team member spends, on average, **8.2 hours** per week manually entering data. That is over five weeks of working time lost every year per person, spent on manual entry tasks instead of work that actually generates value for your business.



But there is a deeper cost than just time. When the data is processed manually, errors creep in. Manual data entry brings a **5% rate of human error**. And when that happens, you lose confidence in your own data to make business decisions. Is the data accurate? Do you have the whole picture? How can you make confident business decisions?

Why ERPs Were not Built for Coffee

Your ERP system knows the price of a kilogram of green coffee. It does not know what happened to it between the farm, the warehouse, and the roastery. ERPs are good at what they were designed to do: managing finance, transactions, and reporting. For a coffee business, that is only a narrow slice of what you need to track.

Coffee generates and tracks specific data. There are coffee-specific realities, such as traceability, roast loss, shipment data, and cupping scores, that generic systems were never meant to capture. You need a specific system that can capture the difference between green and roasted inventory that behaves differently and track the changes.

And as coffee moves through its physical journey from green bean to roasted coffee to shipped order, the data becomes more difficult to capture in systems focused on units, dollars, and transactions. That leads to a gap, not because the ERP system is wrong, but because it was meant to function in a different world.

The Operational Gap

The gap between what happens at the roastery and what is recorded is not just an inconvenience. It is a risk.

If an audit happened tomorrow in your business, **how long would it take to trace a bag of roasted coffee back to a green lot?** For many coffee businesses, the honest answer is: longer than it should. When the data does not flow automatically into the business system, finance and production teams end up working in different realities. The finance team sees the numbers, while the production team knows what happened in the roastery. But neither fully trusts the other's version.

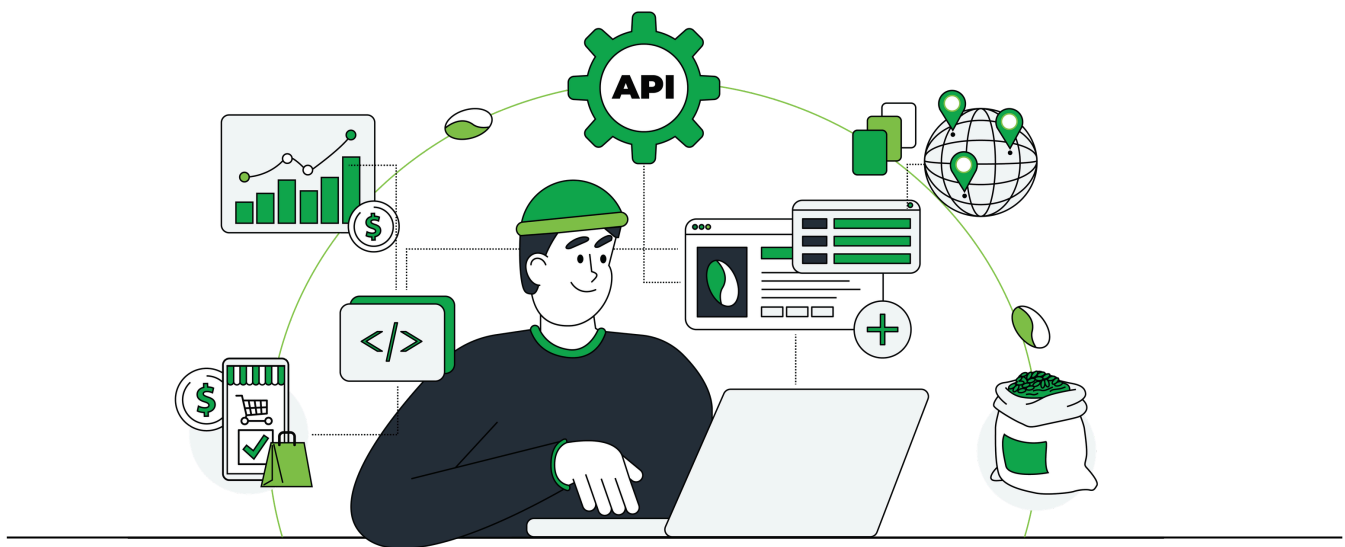
This is where the real risk lies. Inventory data becomes unreliable, and traceability is a manual exercise. As the business grows, the gap widens. The complexity multiplies, manual workarounds with it, and the risk of errors and time costs only grows.



The Role of a Coffee-specific API Layer

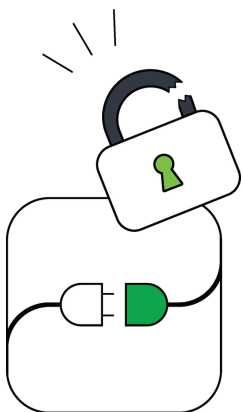
The solution is not a new system. It is a smarter connection between the systems you already have. The Cropster's Business Systems Connectivity (API) layer feeds individual systems with coffee-native data they could never capture on their own.

The Cropster's Business Systems Connectivity (API) sits at the center of your operations, capturing the full journey from green lot to order fulfillment. All of your coffee-specific data - inventory, quality, roast, location, e-commerce - becomes available to any connected system in real time, without manual entry and without a human bridge.



What Better Connectivity Unlocks

Improving connectivity not only saves time, but it also gives your team back the work they were actually hired to do.



Your coffee experts can focus on coffee, roasting, quality control, and value-creating tasks instead of spending time on value-eroding data entry.

Connectivity also unlocks real operational and financial benefits. As the data flows automatically and in real-time, inventory stays accurate, traceability becomes reliable, and visibility is shared across every team that needs it. With a complete and trustworthy picture of the operations, your team can make faster and more confident business decisions.



The financial impact is just as real. Manual data entry carries a **5% error rate**, and fixing a single error costs, on average, **\$53**. Multiply that by the actual number of errors made, and the cost becomes impossible to ignore. That is a direct and recurring hit to your margins.



When your systems are connected, scaling up stops being scary. Real-time coffee intelligence gives you the foundation to grow without the complexity overloading you.



Now, the question is no longer whether your business needs better connectivity, but how much longer you can afford to operate without it. Any business that continues to grow with disconnected systems will face real operational and financial consequences.



Your ERPs matter. Your other systems matter too, but they can only perform as well as the data you feed them. What matters is whether the software you use includes a layer that actually understands coffee and can support the entire operation, and improve its efficiency.



“ Being able to connect roast schedules to our E-commerce and ERP systems for automated order planning is a massive efficiency boost. ”



Amer Ba Shuaib, Production Manager
Camel Step

See how the Cropster's Business Systems Connectivity (API) can work for your stack.

**Get in touch with
our experts!**

**More API
informations**



The coffee productivity platform that boosts profits by reducing complexity from bean to cup.



Cropster is a tech company.

We uniquely combine coffee industry & tech expertise to create a connected, fair and sustainable coffee world

Where every decision is powered by data and every cup is traceable, profitable and responsible... and quality, of course!